

DDE Firmware Upgrade Addendum

The Digital Detector Emulator Software works with the **Digital Detector Emulator Firmware**. **The firmware is already installed into the device.** *If an update is available, a warning message appears in the main software GUI.*

WARNING!! Firmware is outdated. It is recommended to upgrade it as soon as possible. Click upgrade to open the firmware upgrade tool and download the new firmware

UPGRADE

✓ **How to upgrade the firmware**

Download the **Digital Detector Emulator Firmware** (.NIU) on CAEN website in the 'Download' area of the Digital Detector Emulator page.

Open the Digital Detector Emulator **Software**.

Under "Hardware", select "Firmware Upgrade".

You can **download** the firmware from web, **browse and select** the .NIU file, and finally **program** the FPGA.

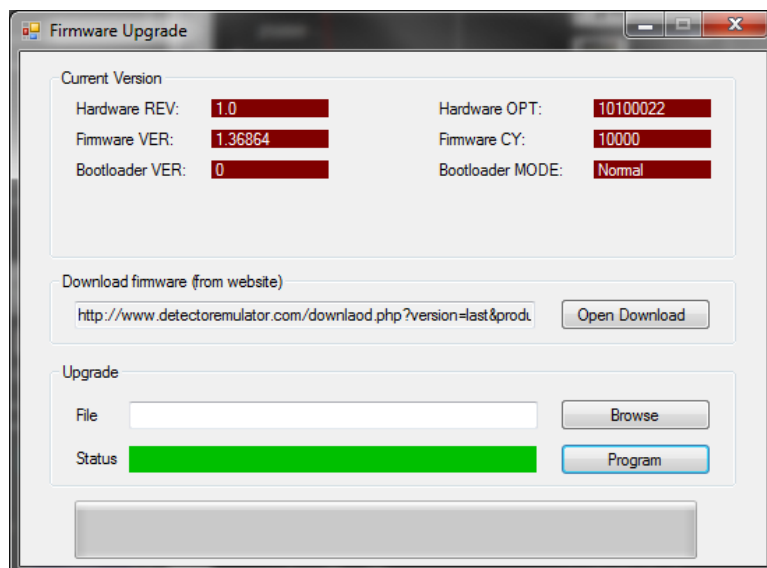


Fig.1: Firmware Upgrade window

When the firmware is successfully upgraded, **restart** the emulator software.

Note: A major upgrade has undergone from the firmware release 1.8 to the 2.3. We kindly suggest the user to check the firmware release and upgrade it to the 2.3 version if necessary. The above described firmware upgrade procedure holds also in this case. For those users already owning a firmware release 2.x a minor upgrade to the 2.3 version is enough.

Note: The FPGA programming can take some minutes. The green bar shows the upgrade status. Please, **wait until the end of the firmware upgrade.**